

# NEWS LETTER



23rd November 2022

[www.bexleygs.co.uk](http://www.bexleygs.co.uk)

## GCHQ National Language Competition 2022

Two weeks ago, twenty three Year 9 students took part in a national language competition hosted by GCHQ, one of the three UK Intelligence and Security Agencies which provides intelligence, protects information and informs relevant UK policy to keep society safe. GCHQ is one of the biggest employers of linguists in the UK, with 42 different languages spoken across their workforce.



National  
Language  
Competition





BGS enrolled seven teams of Y9 students with an impressive arsenal of languages: Nepali, Polish, Mandarin, Maori, Russian and more. Over the course of five days, teams have tackled a variety of language-themed challenges hosted on a virtual platform. These ranged from easy to difficult, and involved a mix of different languages (even made-up languages!).

GCHQ informed teachers that over 3000 teams from all over England took part this year, putting their language skills to the test and battling it out for the top spots on the national leader board.

After an outstanding effort from all BGS teams, we are delighted to announce that three BGS teams made it to the top 20 on the national leader board, with one team conquering the 10th place!



National  
Language  
Competition





**HANDSOME FABULOUS MARMOSET (8120 points, 10th place)**

*Anagha Pai (9LPV)*  
*Diep Anh Nguyen (9LPV)*  
*Angela Luong (9LPV)*  
*Saimom Islam (9LPV)*

**BRAVE CARING ZEBRA (8045 points, 13th place)**

*Ashna Adhikari (9KAS)*  
*Sofie Rygielska (9CPB)*  
*Lev Griffin (9CPB)*  
*Jessica Davis (9CPB)*

**DELIGHTFUL DETERMINED WOLVERINE (8005 points, 14th place)**

*Rafael De Souza-Plans (9PDH)*  
*Naima Mendjeli (9PDH)*  
*Eloise Newton (9PDH)*  
*Kate Rooney-Douillet (9PDH)*



We would also like to congratulate all the other participants for their incredible efforts:



*Elin Mecaj (9LPV)*  
*Anshika Krishnan (9MMC)*  
*Hana Ostrowski (9MMC)*  
*Abigail Escobar (9PDH)*  
*Caitlyn Osei-Tutu (9MMC)*  
*Charlie Furlong (9MMC)*  
*Isabelle Gorman (9LPV)*  
*Eva Hewitt (9MMC)*  
*Louis Luckman (9REL)*  
*Lucas Peters (9VLT)*  
*Oliver Morgan (9LPV)*

**Miss Giglione**  
**MFL Department**



# Welcome to the



*Inspiring art that influences  
new artists everyday...*

## **Alexandre Cabanel**

*"That's my reward for all the trouble I gave myself not to submit an average piece of work."*



Alexandre Cabanel was a French painter, who illustrated historical, classical and religious subjects, many being extremely controversial among other artists. Born on the 28th September 1823, Alexandre was the 9th child to Pierre-Jean Cabanel and Marie Anne Jean Cabanel, and at a young age showed incredible artistic talent. Once he was 11 he attended drawing classes at the Montpellier's free École des Beaux-Arts, which was run by a French painter named Charles Francois Matet. In 1863, the Montpellier council awarded Alexandre his first scholarship, allowing him to study in Paris at just age 13.

Just 3 years later, Alexandre's artistic talent was recognized to be so incredible, that he was awarded a second scholarship and was able to return to Paris and continue his work. His father couldn't afford to send him to Paris, so this was considered a major blessing.

A month after his 17th birthday, Alexandre began attending the School of Painting at the École des Beaux-Arts in Paris, where he was taught by François-Edouard Picot.

## **Recognition and Success**

In 1843 at age 19, Alexandre displayed his first major painting titled *Agony in the Garden*. As he was attending L'École des Beaux-Arts, he had one goal; to have one of his paintings accepted into the Prix de Rome Art competition, which would grant the winner a scholarship to allow them to study for a number of years at the Villa Medici in Rome.

A few months later, he entered a work titled "Odysseus is Recognised by his Servant", and again in 1844 with a work titled "Envoys of the Senate offer the Dictatorship to Cincinnatus", however, he only received sixth place. Alexandre received better luck in the 1845 competition when his work, "The Mocking of Christ" was awarded second place.

In 1846 Alexandre arrived in Rome, where he met Alfred Buyas, who was the son of a wealthy banker. He originally intended to also become a professional artist, however, his father wanted him to become a partner in his bank. Alfred loved to paint, though after realising he would never become a great artist, he became an avid collector of art. He supported Alexandre during his stay in Rome, and as a repayment Alexandre created a portrait of Alfred.







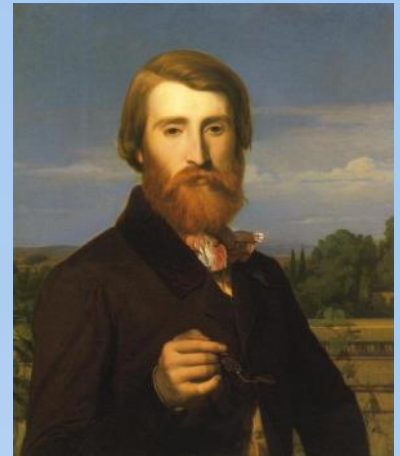
## Controversy and More Success

In 1846 Alexandre painted a large painting of Orestes, son of Agamemnon, but the academy judges despised it. They rejected it and said it was "an oversized and inept composition".

Despite this rejection, Alexandre was inspired by John Milton's "Paradise Lost", and created one of his most recognisable paintings yet, "Lucifer". This was the first depiction of the devil submitted by a student, and caused huge controversy among other students and the public. The judges were shocked and appalled, considering it too romanticist in Alexandre's style. It was promptly rejected. It took Alexandre 3 years with his painting "Death of Moses" to

win over the judges. From that point on, he created a consistent legacy of melodramatic and hugely successful artwork.

He continued to create paintings almost always featuring religious and historical figures, until his death on the 23rd January 1889 at the age of 65. Many of Alexandre's paintings are currently displayed in museums, such as the Musée Fabre in Montpellier, Musée d'Orsay in Paris, Dahesh Museum of Art, and many more.



**Alex Potocnik Hahonina**  
**Year 9, BGS Art Prefect**







# YEAR 10 NEWS

## *DOS Golden Weekly Award (14<sup>th</sup>–18<sup>th</sup> November)*

*Congratulations to all the recipients of the award:*

- \* Harry Middleton - 10EAB (better engagement in form and other lessons)*
- \* Matias Daniele - 10MGG (your work in ethics)*
- \* Hari Rehal - 10IAB (just persistently perfect)*
- \* Rachel Wright - 10AMM (student council & in Emil and the detective)*
- \* Andy Whitmore - 10MEM (always providing insightful discussion points during ToK & PSHCE)*
- \* Clara Gibbins - 10JEA (unfailing polite, maturity & positive contributions to form time)*
- \* Toby Geden - 10ELS (active participation in ToK debate)*

*Congratulations!*

## *Year 10 Form attendance Award (14<sup>th</sup> - 18<sup>th</sup> November)*

*The form with the highest attendance this week is:*

**10MEM**

*Congratulations to all students in Mrs Moore's form.  
Let us do it again next week!*

*Respect yourself and others will respect you  
Mr Oyedeji*





## PE News

### Girls' Football

The U18 girls produced a brilliant performance in their league game against Beths on Thursday, winning 11-0. Freya managed to score 4! The girls are up to 3rd in the table. Great work!



### London Youth Games Cross Country Competition

Well done to Lucas Drake and Austin Tanner who represented Bexley in the London Youth Games Cross Country competition at Parliament Hill Fields on Hampstead Heath.



### Table Tennis

Well done also to Dylan Banks (Year 9) who picked up 4 wins out of 5 for Cleeve Park table tennis club to help the club to top of their league at the moment.



### *Mr Lines Head of PE*



### Year 7 Football

On a miserable wet and windy afternoon the BGS Year 7 squad gave a fantastic performance to win 10-0 against King Henry School. As England beat Iran, a few of the team were giving Southgate a selection headache for future world cup squads. Yet more pupils managed to make their debut for the school which shows the strength of this year's footballers. Congratulations to all involved!

***Mr Mackle, PE Department***



We have been trialling the use of leggings as part of our PE kit for girls in our GCSE PE classes. Some students have found them preferable to the shorts or tracksuit bottoms previously used. We are now happy to extend this kit choice to girls in all years. Leggings with BGS badges are available from Casey's. We are happy for plain black leggings to be purchased elsewhere, but please ensure that they are sportswear, and are suitably opaque. If we do not feel that leggings are suitable for PE we may ask your daughter to wear shorts instead.

***Mr Lines, Head of PE***

## Student Successes in the Music Department



Congratulations to Nathan Singleton, 12ECG, for passing his ARSM Clarinet Exam with Distinction! Nathan had to perform 30 minutes of challenging music to examiners, which is a feat for any performer.



Congratulations also to Mia Nguyen, 9PDH, who has successfully auditioned for the London Schools Symphony Orchestra (LSSO). Mia will get the opportunity to work with distinguished conductors on a variety of orchestral repertoire and accompanying some of the world's up-and-coming soloists.

We love to hear good news stories from our students.  
Please let us know in the music department!

***Mrs Goddard, Head of Music***





# Recycling symbols

This guide from the **Environmental Action Group** explains common symbols found on packaging and what they mean for recycling, and can help you recycle at home!



Labels like these tell you the type of material and how widely they are recycled. This label tells you that the glass bottle is recyclable in over 75% of UK councils, meaning you can put it in your glass and plastic recycling.

This symbol shows that 20-75% of councils collect this type of item for recycling. Here, you should refer to your local council's guidance, available on their website. This plastic tray can be recycled with plastic and glass in the borough of Bexley.



This label shows that the item cannot be recycled in more than 80% of boroughs. You should refer to your local council's guidance, but in this case, the plastic film cannot be recycled in Bexley and should be disposed of in the general waste.

Certain types of plastic packaging are only available to recycle at supermarket carrier bag collection points. If you can't take these items to a collection point, they should be disposed of in general waste.





This symbol is used in many European companies to show that the producer has made a financial contribution towards the recovery and recycling of packaging. This doesn't necessarily mean that the item is recyclable.

The number indicates the type of plastic resin the item is made with.. Whether the item can be recycled is determined by this type of resin, but can differ between boroughs. Councils don't offer guidance on which plastics can be recycled in reference to this number.



This is a reminder to not litter, and doesn't tell us about whether an item can be recycled or not.

This indicates that an item can be recycled. However, it does not guarantee it can be recycled in your borough, or at kerbside.



Waste electrical items, from household appliances to mobile phones, can be recycled if you see this symbol. However, you need to check if it can be recycled at kerbside, or should be taken to local recycling centres.

These items are accepted for recycling at local centres. Refer to your council's guidance on these disposal points.

## Thank you for reading!

Rosie Bellamy 12THW







# The YoungMinds Wellbeing Calendar 2022



Looking after your wellbeing as you count down to the winter break.

## MONDAY

### 28 Affirmation station

Spread some winter joy to your classmates by writing positive affirmation cards, then having your teacher collect them and pass them around. For example: 'I am loved', 'Anything is possible'.

## TUESDAY

### 29 Snowman says...

Just like the classic game of 'Simon says' but with a wintery twist. Who'll be the last person standing?

## WEDNESDAY

### 30 Three good things

Write down three good things that have happened to you today or this week – keep these with you as a reminder.

## THURSDAY

### 1 Guided meditation

Take time to relax and re-centre with a short guided meditation. There are loads of free videos online!

## FRIDAY

### 2 Positive playlist

Suggest your favourite, feel-good songs and create a positive playlist as a class.

### 5 Mindful walk

Take a wintery walk outside in silence. What do you hear? What do you see? What do you feel?

### 6 Dance fever

Learn a TikTok dance as a class – yes, even your teacher!

### 7 Alternative Christmas card

Write a kind, supportive card that you'd give to someone who might be struggling this festive season – or for someone who doesn't celebrate Christmas. For example, 'you're not alone'. Your teacher can then collect and hand them out.

### 8 Things in common

Discuss in small groups things that you have in common – except that you go to the same school! Preferably with people you don't usually hang out with.

### 9 Mindful colouring

Stick on your positive playlist and let your creative juices flow with a mindful colouring session.

### 12 Stretch it out

Have a much-needed stretch and unwind with a yoga session. There are loads of free videos online!

### 13 Your 2022

A lot has happened this year. Write down your reflections of 2022 and any hopes or goals you might have for 2023.

### 14 Self-soothe session

Create your own self-soothe box for whenever your feelings are overwhelming. For tips, check out the 'How to make a self-soothe box' blog on our website.

### 15 What makes you, you

Draw a picture of yourself and, around it, write positive comments and things you like about yourself. Are you kind? Are you smart? Do you have a great talent?

### 16 Random act of kindness

Do something nice for someone else today. Doesn't it feel great?



For help and advice scan here







# Life Skills

## Growth Mindset: Thinking Traps

This week, as part of our Sixth Form Life Skills, we looked at the following Thinking Traps and how these would affect our learning behaviours.

Jumping to conclusions	This is hard. I won't cope with exams in Year 13.
Tunnel vision	Everyone else is better than me.
Magnifying/minimising	I got a bad mark. I am going to fail.
Me, me, me	I'm not clever enough to do the IB
Them, them, them	Lessons are rubbish. Teachers aren't helping me.
Character assassination	X always gets good grades and doesn't even work!
Always/never	I'm never going to be good at X.
Mind reading	Everyone else is finding this so much easier

Humans are hard-wired to focus on the negative and so we often fall into thinking traps without us realising.

To help us move forward, we first need to Acknowledge that we have fallen into a trap.

We then need to Challenge our thinking.

This enables us to Take action to make progress.

In short, we need to ACT

Students were then set the challenge of rethinking some of their negative mindsets using this acronym.

### Being open-minded: rethinking

*How could you consider things from a different perspective?*

Character assassination	X always gets good grades and doesn't even work!
-------------------------	--

**A: acknowledge this is character assassination.**

**C: challenge your thinking:**

How do you know X doesn't work?

Have you ever asked X?

**T: take action**

Ask X how they revise to help give you new ideas

One of the best ways to practise doing this is with a friend - we are often much kinder to our friends than we are with ourselves! Next time you catch your friend falling into a thinking trap, think about how you could support them to Challenge their thinking.





## Safeguarding Update

### PhoneSmart License - Preparing your kids to be kind and stay safe online

EE provides a course for parents and children to help navigate the world when using smartphones. This is available to users of any network. It covers key aspects of online behaviour, from cyberbullying to fake news and has fun quizzes, interactive elements and pop-up facts to help children learn vital online do's and don'ts. Parent and guardians also get their own dashboards to check on your child's progress, follow the Episodes they are doing and get extra support and resources.

You can download this here:

<https://eephonesmart.co.uk/>

*Mr S Auckland, DSL and Deputy Head*



## Important information for all GCSE students

Please note, contingency days are timetabled for the **afternoons of 8th and 15th June**, as well as **Wednesday 28th June 2023**. These contingency days are designed to be used in the event of national or significant local disruption to examinations.

**This means that all exam candidates must be available to sit exams from the date of their first exam until Wednesday 28th June 2023.**

This decision is not a school decision and does apply to all candidates in all schools.

Please click on the link [here](#) to view the provision GCSE examination timetable 2023.

***Mrs Bono***  
***Examinations Officer***





BGS PARENTS' ASSOCIATION

# Nordmann Fir Christmas Trees For Sale!

**\*orders due  
by Thursday\***



The PA is pleased to offer discounted  
Nordmann Fir Christmas trees to all  
BGS families, staff, friends and neighbours!  
A wide range of sizes are available from £22 - £60.  
All proceeds will fund school resources or initiatives.

**to order your tree, visit:**  
**[www.bgspa.co.uk/trees](http://www.bgspa.co.uk/trees)**

Orders are due by Thursday 24 November





# BGS PA Craft Club



PA Crafters have been busy! We'll be selling handmade wreaths, tree decorations, gifts and candles at the Christmas Concert. All proceeds will benefit the school.



BGS PA

# Christmas

## RAFFLE!

TICKETS £1 EACH

TO BUY YOUR TICKETS, VISIT:

**[bgspa.co.uk/raffle](http://bgspa.co.uk/raffle)**

**GRAND PRIZE:**  
**£200 Bluewater Gift Card**  
plus  
**The 12 prizes of Christmas:**

- Christmas Hamper
- £100 Bluewater Gift Card
- Wonderland, Adventure Island, 4 tickets
- £50 Bluewater Gift Card
- Wine Hamper
- Pamper Basket
- Hangloose Adventure Zipwire voucher
- Nandos, Sharing Platter voucher
- £20 voucher for The Boathouse
- £20 Morrisons Gift Card
- £15 The Entertainer Gift Card
- Christmas Candles Basket

The deadline for ticket sales is Sunday 11th December.  
The raffle will be drawn on Wednesday 14th December  
by PA trustees & winners notified. Thank You!





an invitation from  
BGS Parents' Association

# December Meeting & Social

Monday 12 December 2022  
from 7.30pm  
Danson Stables

Come meet the PA!  
Please RSVP  
by Mon 5 Dec to:  
[bgspa@bexleygs.co.uk](mailto:bgspa@bexleygs.co.uk)



# TWO DAY WINTER FILM & TV WORKSHOP

**For young people in Years 3-8**  
**21st - 22nd December 10.00-3.00pm**  
**Hurstmere School, Sidcup**



[www.end2endtv.co.uk](http://www.end2endtv.co.uk)

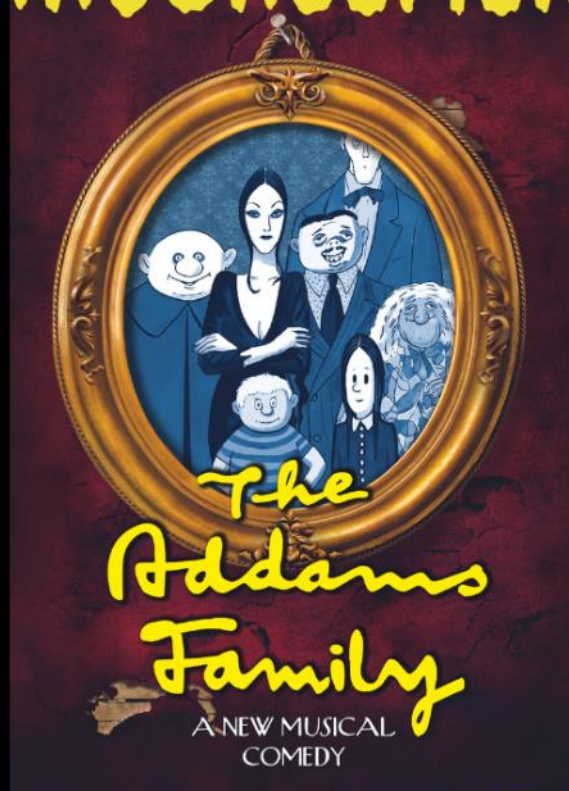




News items you may have missed

# AUDITIONS ANNOUNCEMENT!

**Google  
Classroom  
code:  
ow7tbxt**



Audition packs on Google Classroom. Email Mrs Goddard if you have any questions.

Auditions will be held on **Wednesday 14 December**, Main Hall, after school.



BEXLEY GRAMMAR SCHOOL  
MUSIC DEPARTMENT PRESENTS



# BGS CHRISTMAS CONCERT

**Monday 28 November, 6 - 8.30pm**

**Main Hall**

**£6.50/£4 concessions**

Tickets go on sale on Friday 11 November at 9am

[Click here to purchase your tickets!](#)





Emil and The Detectives adapted by Carl Miller  
written by Erich Kästner.

Performance dates;

**Wednesday 7th December 7pm**

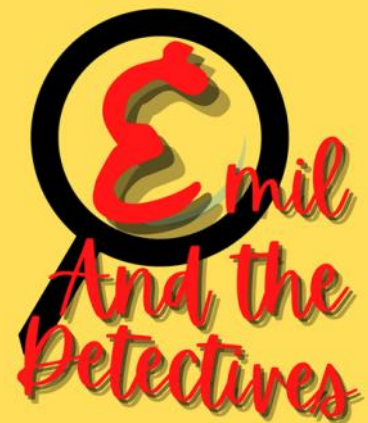
**Thursday 8th December 5pm**

**Friday 9th December 7pm**

Adults £8.00

Children/ Concessions £5

Family (4 tickets, at least 2 children) £20



*Growing up is the most exciting adventure of all.*

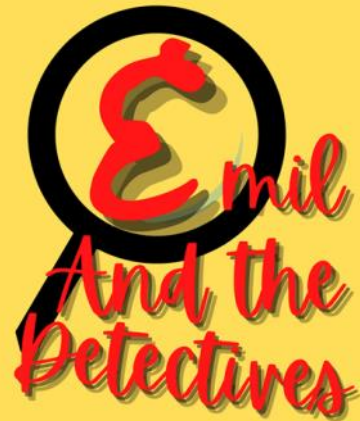
Featuring live band (performed and composed by students). Projections (designed and animated by students), an exciting lighting design (yes, by students), period costumes and props (also by students) and a huge ensemble of 96 actors (all students) directed by a teacher...

Join young Emil as he says goodbye to his mother, leaves his small town and sets off on a journey that will change his life. When his money is stolen on the train by a mysterious stranger, Emil thinks he's lost everything. But as he starts tracking down the thief, he soon discovers that he's not alone in the big city after all. For this classic tale of a boy learning to rely on himself – and on his new detective friends – the BGS Theatre stage transforms into 1920s Berlin: a place full of surprises and danger, where everything moves at the speed of your imagination.

This performance is suitable for children aged 1 to 101. Come and join us for an exciting and fun celebration of our wonderful students' talents.

Ticket link: <https://www.eventbrite.co.uk/e/emil-and-the-detectives-tickets-459955418037>





Click on the link <https://www.youtube.com/watch?v=gjmn6Ju0gwI> to watch the show trailer created by Sophia Barry, Year 13

Have you seen this man?



He stole money from an innocent child!

call B A V 0579  
Password- Emil



Wednesday 7th December, 7pm  
Thursday 8th December, 5pm  
Friday 9th December, 7pm





# *Emil And the Detectives*

## *Request for costumes for the school production*

*This year's school play 'Emil and The Detectives' is well underway and the cast are very excited to share the show with you in December (tickets will be on sale soon).*

*As the play is set in 1929, it requires a lot of period costumes to create the correct atmosphere.*

*Please can I ask if you are able to donate any of the following:*

**Smart shorts** (Chinos or school shorts. Not football shorts or cargo shorts) as some of the cast are smaller, shorts from when students left Year 6 would be perfect. These should fit students up to 16, so if an older student has grown out of clothes, this would be ideal.

**Men's Suits** Any suit would be great, pinstripe or tweed would be ideal. These need to fit children, so again ones that are grown out of or belonged to a slender/shorter man, please.

**Long Dresses/ Skirts** Anything below the knee is acceptable, more for everyday wear than glamorous (we have those dresses). These will be worn by adult characters, rather than children characters, so needn't be too small- anything up to size 10, or children's 16.

**Pinafores or Gingham Dresses** Again, if you have these left over from primary school, these are for 'child' characters so may fit.

## White Top Hat

## Shirts

If you have any shirts, plain pullovers, hats or long socks that would suit the period they will be greatly received.

Please email [otley\\_h@bexleygs.co.uk](mailto:otley_h@bexleygs.co.uk) if you have any of these items and are willing to donate them.

Thank you







## Native speakers of Spanish, French, German, Italian or Chinese...



We are looking for members of our school community, who are native speakers of Spanish, French, German, Italian or Chinese, who would like to join our amazing team of Modern Foreign Language teachers in September 2022 in maximising the exposure our Sixth Form students have to authentic conversation in their chosen language of study.

The Language team would organise a schedule around your availability, which would allow for small workshops and conversation classes of 2-5 students. We are looking for native speakers who could ask students questions and support them to articulate and develop their responses accurately. Our Language teachers would support you with the planning of the workshops and topics for discussion. Topics are interesting and include: Identity, Traditions, Tourism, Food, Culture, School Systems, Equality and The Environment.

If you would like to know more, please see this link to our FLA Advert [here](#) (also available on the school website). Alternatively you can email [reed\\_j@bexleygs.co.uk](mailto:reed_j@bexleygs.co.uk). We would welcome the chance to include our wider community in our mission to continue to provide an outstanding curriculum.

***The MFL Team***





## How to apply for Free School Meals

Are you entitled to free school meals? Click on the link [here](#) to check your eligibility.

## Lost Property

If your child has lost any of the items shown above or anything else, please click on the link [here](#) to report lost property or email us directly [reception@bexleygs.co.uk](mailto:reception@bexleygs.co.uk).

**Reception Team**



## Forthcoming Events

### November

Thursday 24th ~ Nordmann Fir Xmas Tree orders due (see notice)

Monday 28th ~ Appointment booking **opens** at 12 noon for Year 13 Parents' Evening (letter [here](#))

~ BGS Christmas Concert 6– 8.30pm (see poster)

Tuesday 29th ~ Power Day 2



### December

Monday 5th ~ Appointment booking **closes** at 12 noon for Year 13 Parents' Evening

Tuesday 6th ~ Year 13 Virtual Parents' Evening (letter follow soon)

Wednesday 7th, Thursday 8th & Friday 9th ~ BGS Christmas Production 'Emil and the Detective' (see poster)



Monday 12th ~ PA Meeting & Social (see notice)

**Friday 16th ~ Final day of autumn term (all students in school)**

### January 2023

**Tuesday 3rd ~ First day of the spring term (all students in school)**

Tuesday 10th ~ Year 12 Virtual Parents' Evening

Tuesday 24th ~ Year 9 Virtual Parents' Evening for CORE SUBJECTS

**Tuesday 31st ~ Inset Day (school closed to student)**

### February

Tuesday 7th ~ Year 9 in person Options Evening for OPTION SUBJECTS

### June 2023

Wednesday 28th ~ GCSE EXAMS CONTINGENCY DAY (see notice)