



# BEXLEY GRAMMAR SCHOOL SIXTH FORM

IB WORLD SCHOOL  
SPECIALISMS IN SCIENCE, MATHEMATICS AND LANGUAGES

DEVELOPING COMPASSIONATE LEADERS



# BGS SIXTH FORM AT A GLANCE

## DISTINCTION

- Rated **'Outstanding'** by Ofsted
- The only fully IB Sixth Form in a South East London borough
- Listed in **top ten** schools nationally for the quality of university destinations secured by students
- Top-performing school in the London Borough of Bexley for securing Oxbridge and Russell Group university places for our students

## 2021 IB HIGHLIGHTS

- Average UCAS points achieved is equivalent to **3A\* + 1A** at A Level
- 92%** of all IB grades were level 5-7 (7 is the highest grade in the IB)
- 62%** of all IB grades were level 7/6 (equivalent to A\*/A at A level)
- 5 students** achieved the perfect score of 45 points (300 worldwide in 2020)

## 2021 DESTINATION HIGHLIGHTS

- 63%** students gained places at 23 out of the 24 Russell Group universities, including Oxford and Cambridge
- Over 90%** students gained their first or second choice of university
- Many students secured prestigious apprenticeships including the 'Big Four'. BGS is a target school for EY (Ernst and Young) and Commerzbank

## WHY CHOOSE BGS?

- For access to the most prestigious educational experience on offer in the world
- For the warmth of the relationships between students and staff
- For superb teaching by enthusiastic subject experts
- For the individual care for which BGS is renowned
- For an edge over other students in applications to university or prestigious apprenticeships or employers; universities prefer the IB and employers love it
- For a broad and vibrant extracurricular life (for which you gain credit as part of the IB Diploma)



# WELCOME FROM THE HEADTEACHER

“The combination of BGS and the IB presents you with a unique, outstanding opportunity.”

Bexley Grammar School Sixth Form is the only fully IB Sixth Form in South East London, a unique opportunity for a world-class education on your doorstep. The International Baccalaureate Diploma Programme (IBDP, often abbreviated to IB) is the best option for bright, ambitious young people today. This prospectus explains briefly why the combination of BGS and the IB presents you with a unique, outstanding opportunity. For more details, visit the Sixth Form portal on our website.

Beyond our enviable academic record, we are genuinely proud of the destinations our students secure on leaving us in Year 13. Over the past three years, over 80% of students gained their first choice of university (and most of those are secured soon after 6th July when IB results come out, beating the rush in August).



We thrive on our consistent success in securing the best destinations for our students, from prestigious work-based placements to a whole range of universities, including record Oxbridge and Russell group university success, for any school in the London Borough of Bexley.

Yet, in addition to these achievements, we are known in our local community as a school that cares for every individual. The outcomes speak for themselves but you need to visit us to get a sense of the vibrant buzz of the school community that we enjoy.

See the Sixth Form section of [www.bexleygs.co.uk](http://www.bexleygs.co.uk) for details.



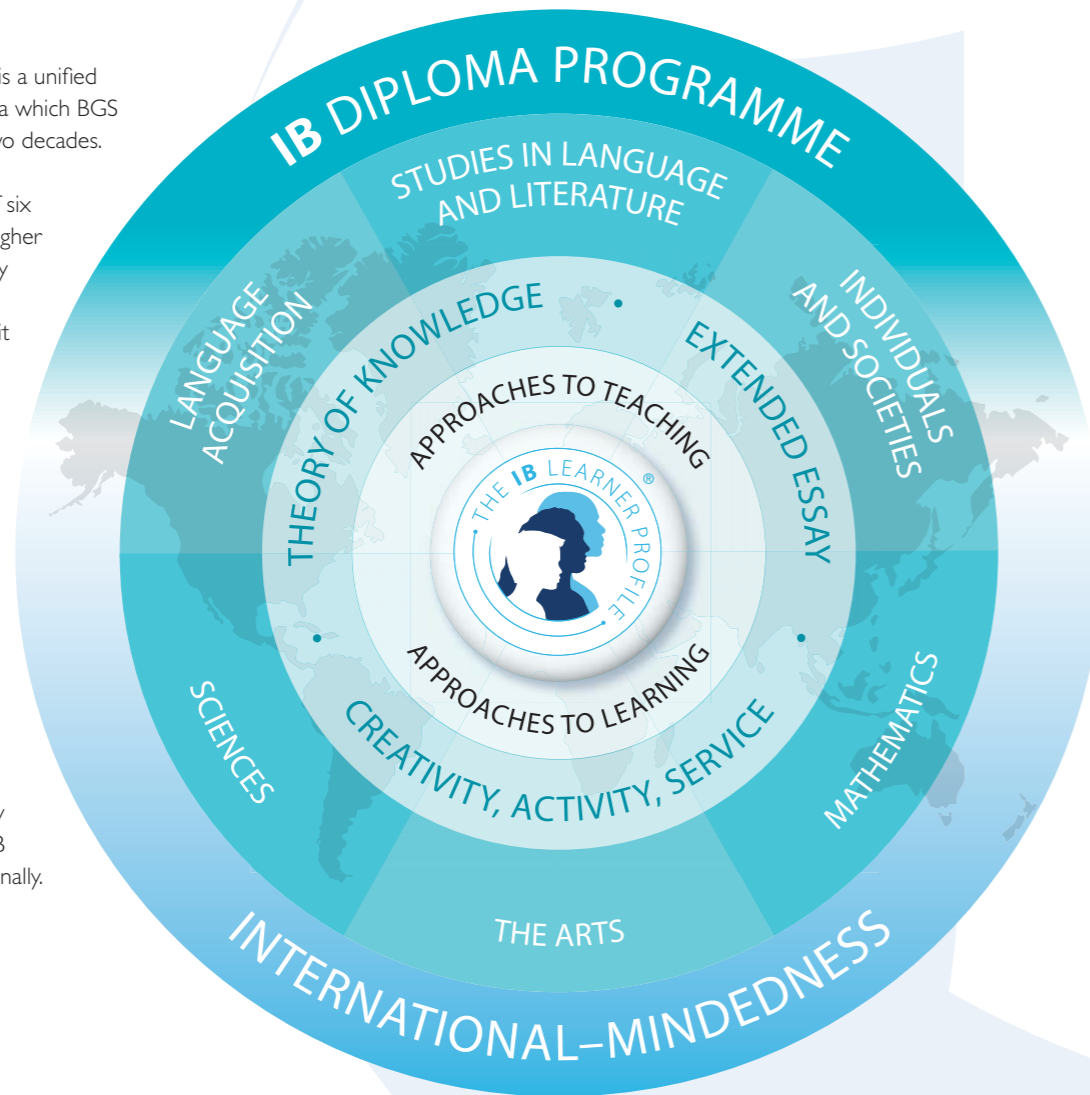
# WHAT IS THE IB?

“Many British Universities openly express a preference for IB students.”

The International Baccalaureate is a unified programme leading to a Diploma which BGS has been delivering for nearly two decades.

Students follow a programme of six subjects with three studied at Higher and three at Standard Level. They follow a Theory of Knowledge course, record activities for credit under ‘Creativity Action Service’ and complete an Extended Essay. At the heart of the IB programme is an endeavour to nurture independent, creative learners with a lively curiosity about the world in which they live.

Many British Universities openly express a preference for IB students because of the depth and breadth of their study and the life skills they bring with them to the university experience. And of course the IB Diploma is recognised internationally.



# WHY THE IB?



## Universities prefer it

Universities now fully recognise the well-rounded, independent qualities of typical IB students and in recent years the best universities have been making increasingly attractive offers to BGS students. On the Sixth Form pages of our website you will see the impressive journeys our students have taken beyond BGS - the IB really is a passport for the future...

## Employers love it

Employers are desperate for students with a language, with some mathematical ability, and with communication skills – all these are developed by the IB Diploma.

## Extracurricular credit

CAS (Creativity, Activity, Service) allows you to receive, officially, credit for hobbies, co-curricular activities, voluntary work and work experience while the Extended Essay hones skills either for a university dissertation or for that research or business report that sets you apart from your colleagues at work.

## It caters for a range of abilities

The IB suits a broad ability range – not only do we have IB students going on to Oxford and Cambridge and into Medicine, Law, Engineering and PPE, but every IB student last year, whatever their ability, received offers from respected universities – not one IB student failed to gain a place at university or an offer of employment.

## Assessment styles

Another feature that may well benefit you is that there are so many different assessment styles: unlike A Levels which are entirely linear and exam-based, most IB subjects are modular, with coursework, oral presentations, practicals and group work accounting for, on average, about 50% of the marks.

## An early finish

You finish your IB examinations in May and receive your IB results on 6th July, securing those destinations six weeks before the August A level results.

## A global perspective

It is more necessary than ever for tomorrow's leaders to be able to engage with the whole global community. The IB prepares you best for the fast-changing world of your future.

“A-levels system no longer ‘fit for purpose’.”

Royal Society President (TES October 2017)

# SUBJECT CHOICES

The IB curriculum is broadly based in subject groups. Students choose one subject from each of the groups 1-6 but for group 6, may select another subject from groups 2, 3 or 4 instead of those offered in group 6. Choices should follow your interests and enjoyment of a subject.

**BGS offers the widest IB subject choices available in the UK:**



1	<b>ENGLISH</b>	<ul style="list-style-type: none"> <li>Literature</li> <li>Literature &amp; Performance*</li> </ul>
2	<b>LANGUAGE</b>  'Beginner' languages are available as an alternative for students who would like to learn a new language.	<ul style="list-style-type: none"> <li>Chinese</li> <li>French</li> <li>German</li> <li>Italian</li> <li>Japanese</li> <li>Latin</li> <li>Spanish</li> </ul>
3	<b>INDIVIDUALS &amp; SOCIETIES</b>	<ul style="list-style-type: none"> <li>Classics</li> <li>Business Management</li> <li>Economics**</li> <li>Geography</li> <li>Philosophy of Religion &amp; Ethics</li> <li>History</li> <li>Global Politics</li> <li>Psychology</li> <li>Social &amp; Cultural Anthropology</li> </ul>
4	<b>SCIENCE</b>	<ul style="list-style-type: none"> <li>Biology</li> <li>Chemistry**</li> <li>Computer Science**</li> <li>Design Technology</li> <li>Environmental Systems*<sup>1</sup></li> <li>Physics**</li> <li>Sports, Exercise &amp; Health Science</li> </ul>
5	<b>MATHEMATICS</b>	<ul style="list-style-type: none"> <li>Mathematics - Analysis and Approaches**</li> <li>Mathematics - Applications and Interpretations*</li> </ul>
6	<b>ARTS &amp; ELECTIVES</b>  Or a further choice from groups 2, 3 or 4 above.	<ul style="list-style-type: none"> <li>Film**</li> <li>Music</li> <li>Theatre</li> <li>Visual Arts</li> </ul>

\* Indicates a subject that is only available at Standard Level.

\*\* Indicates a subject that is only available at Higher Level.

<sup>1</sup> Environmental Systems can count as a group 3 or group 4 subject allowing students to take two subjects from group 6. Music and Theatre for example.

# ASSESSMENT

Each subject is graded on a scale of 7 to 1 where 7 is the maximum. The award of the Diploma requires students to meet specified conditions including a minimum total of 24 points and the satisfactory completion of the "Core" – Extended Essay, Theory of Knowledge and CAS – for which a maximum of 3 points are awarded.

Thus:

- A low pass might look like: 6,4,3,5,4,4 (subjects) +1 (core) = 27 points
- An average pass might be achieved as: 7,6,5,5,5,4 +2 = 34 points
- An Oxbridge place might be secured by: 7,6,6,6,6,5 +2 = 38 points



# CHOOSING YOUR SUBJECTS

Our advice is that students should choose subjects that they enjoy whilst at the same time preserving a pathway to further study in Higher Education. Although typically Universities base their course offers around the Higher IB subjects, they are also interested in the 'whole' person. IB students have an advantage because of the additional elements that make up the diploma and which link the six subjects together. This gives our students an edge over non-IB students with similar grades who are competing for the same university course.

The IB structure encourages a balanced choice which includes the essential further study of English and Maths but also the depth required through the Higher Subjects. Full details of all subjects are available on the school website [www.bexleygs.co.uk](http://www.bexleygs.co.uk).



“IB students have an edge over non-IB students with similar grades.”

# THE REWARDS OF SIXTH FORM LIFE

The demands of Sixth Form life are often underestimated by those starting Year 12; a student needs to become independent and responsible for his/her own learning from the very first day. In addition to the courses themselves, you have numerous opportunities including: physical education activities, community service, work experience and a range of personal development programmes such as the Duke of Edinburgh award scheme, Sports Leadership and Language Leadership. Add into this mix the leadership opportunities through which the school is so enriched – Head and Deputy Prefects, House Prefects, Subject Prefects, Peer Mentors, support for all manner of extracurricular activities – and you will reap the rewards of being busy, confident, committed students.



As in all areas of life, you only get out what you put in. Our most successful students are our busiest! They immerse themselves in the life of the school and are in large part responsible for the very special atmosphere and 'buzz' that anyone who comes in contact with the school senses almost immediately.



You make a five-term commitment to your studies and therefore should consider very carefully how you commit your time outside school hours. You should not undertake part-time employment which will have an adverse effect on your studies and you should avoid appointments and holidays in school time. With your commitment comes the reward of academic success and the promotion of independent life skills and personal qualities which will serve you throughout your exciting future.

The IB is the best next step for bright, ambitious young people today. There are literally thousands of Diploma packages available at BGS – find the one that uniquely prepares you for the next stage in your education/ career/life.



“Our most successful students are our busiest!”

# CAREERS AND HIGHER EDUCATION

“The University Admissions Officers’ Report concluded in 2015 that the IB Diploma Programme is the best preparation for workplace and university.”

ACS Report (June 2015)

Universities make offers based on your three higher subjects (e.g. 6,6,5 or 7,5,5) and your overall point score, between 24 and 45 (see above). The average point score for the year group at BGS is usually around 34 points compared to a world average of about 30 points.

The majority of BGS sixth form students go on to university (approximately 90% on average over the past three years) and all students are supported throughout the process of choosing and applying by tutors, sixth form staff and the school’s Careers and Higher Education Adviser.

Beginning in the spring term of Year 12, students are encouraged to research higher education options carefully, including visiting universities and attending taster events. Visiting speakers from universities and employers contribute to the annual Careers and University Fair for students. An evening providing detailed information about preparing to apply for specific subjects takes place in the Spring for Year 11 and 12 parents and students, and a general Higher Education Information Evening is held for Year 12 parents and students in the summer term.

For those students who are looking at alternative options to university, trips are arranged to Apprenticeship and Insight events. Information sessions are also available for parents of Year 11 and 12 students, so they can be made aware of the other routes their child may take.



The school places a strong emphasis on providing for every individual; the careers office operates an open access policy, with students able to call in for information and advice, or make appointments for longer discussions.

Those aiming at the most selective university courses, including Oxford, Cambridge and medical schools, are supported through weekly meetings and discussion groups, guest

lectures by academics, admissions test and interview preparation, and dedicated all-day sessions each term. The school also hosts the Borough’s annual Top Universities conference. Additional opportunities are advertised via email, the weekly 6th Form Notice bulletin and Google Classroom. A designated “Alternatives to University” Google Classroom is available to all Year 12 and 13 students to share specific opportunities as they arise.



INTELLECT, EMPATHY, COURAGE

Bexley Grammar School,  
Danson Lane, Welling, Kent DA16 2BL  
Tel: 020 8304 8538

[enquiries@bexleygs.co.uk](mailto:enquiries@bexleygs.co.uk)  
[www.bexleygs.co.uk](http://www.bexleygs.co.uk)